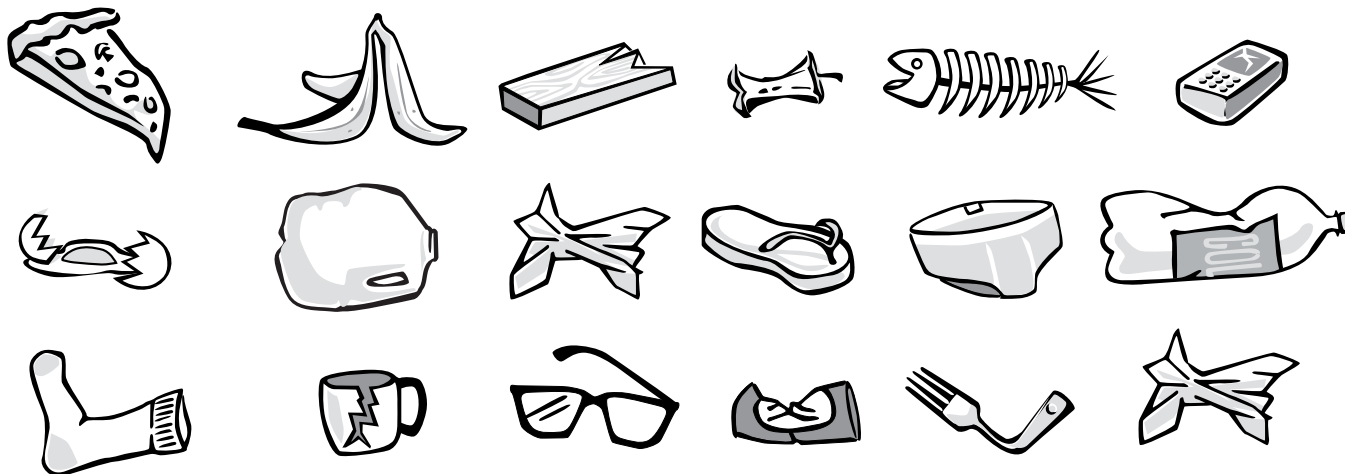
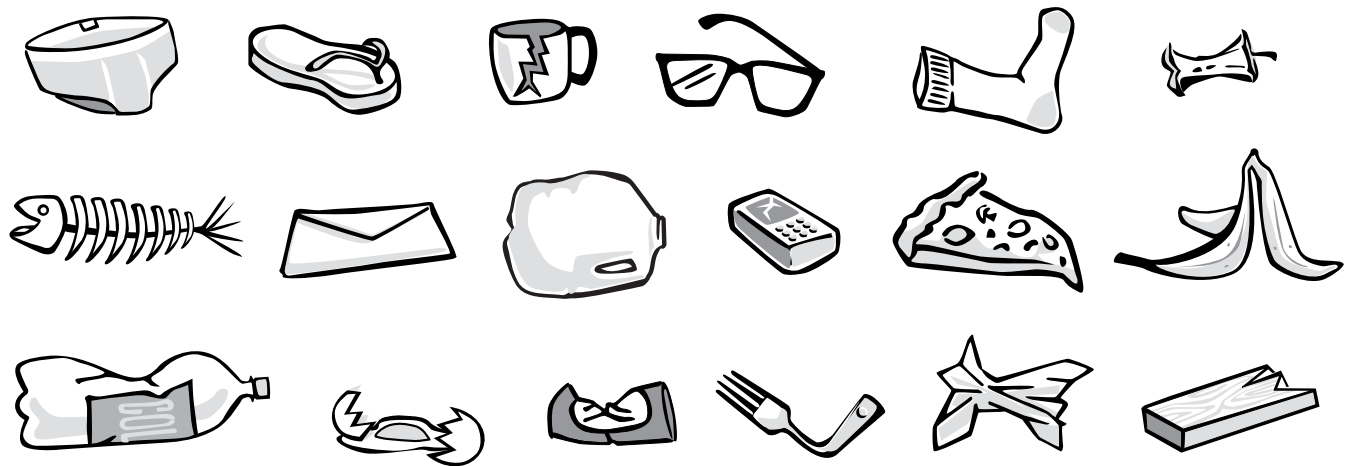
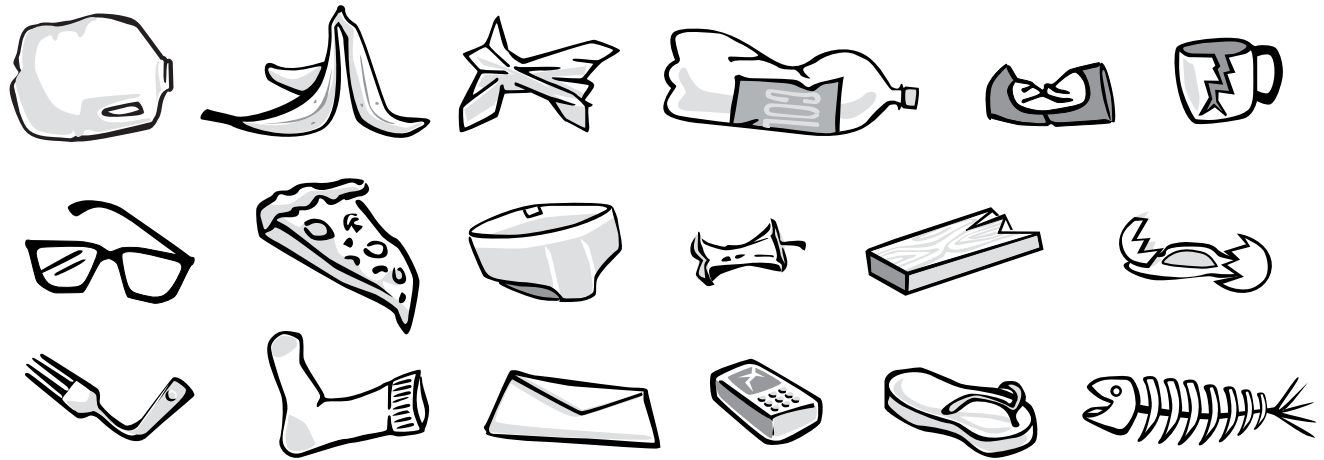


TRASH, TRASH, TRASH

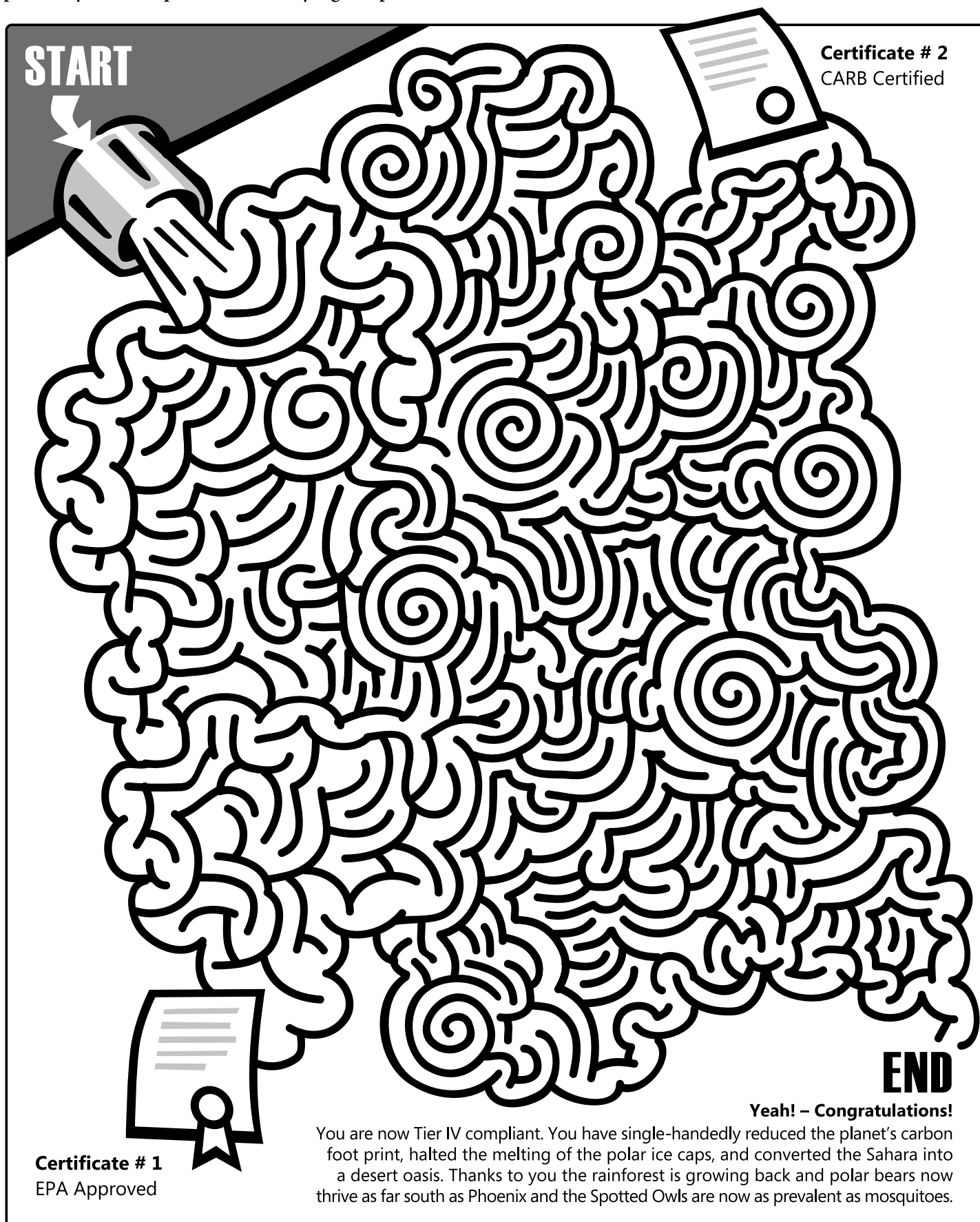
Which 1 item of trash does not appear in all of the three boxes below?



The envelope doesn't appear in the last box

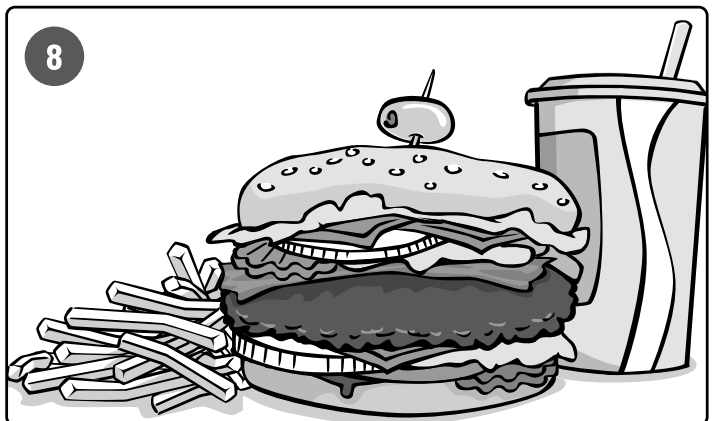
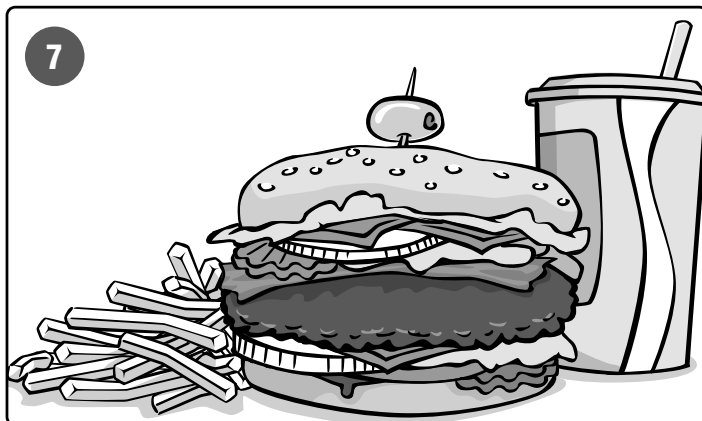
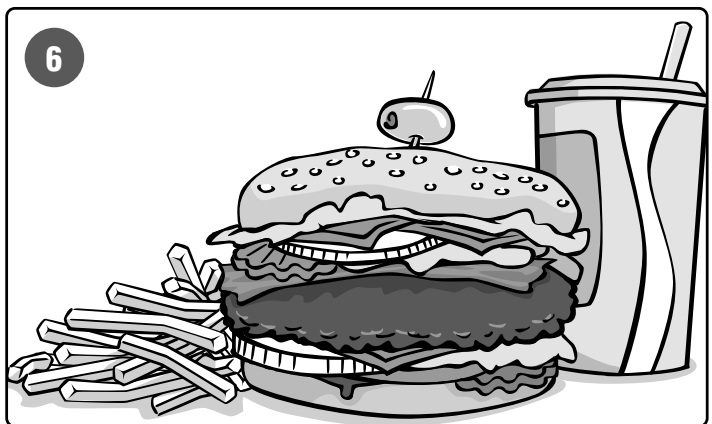
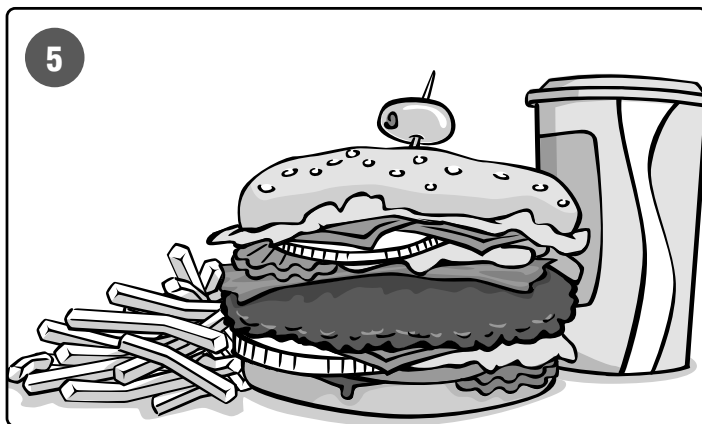
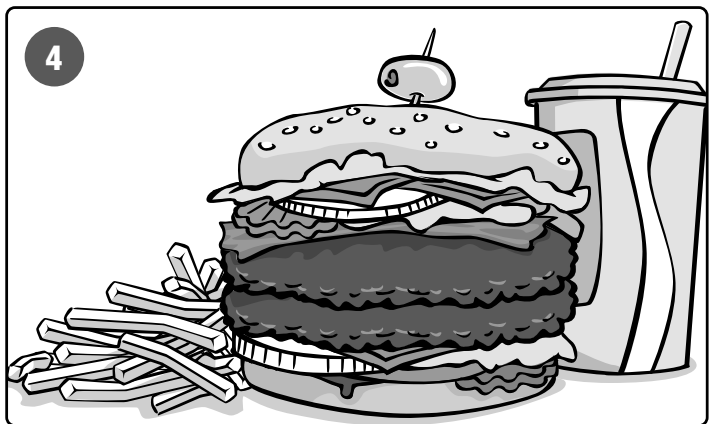
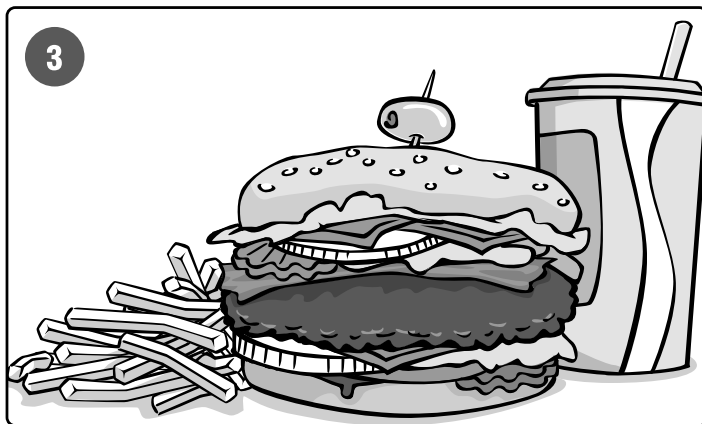
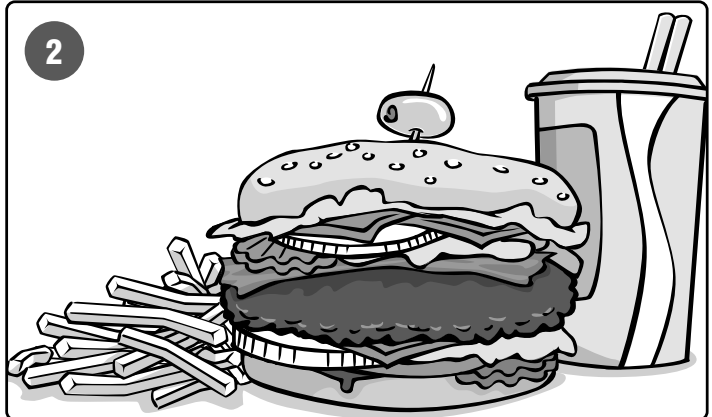
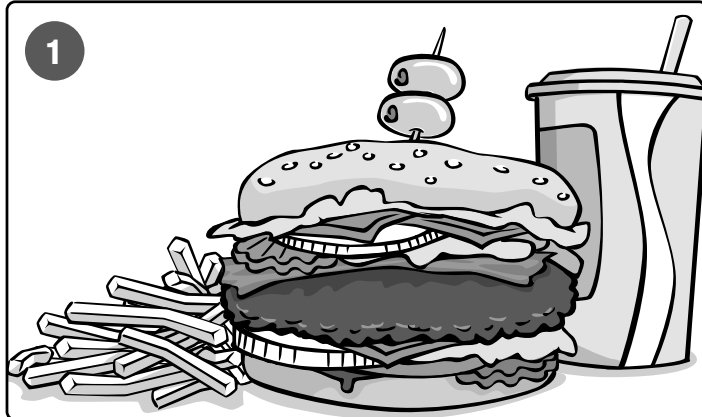
EMISSIONS MAZE

Become Tier IV compliant by achieving both strict requirements in order to navigate through the maze and prevent your sweeper from destroying the planet.



LET'S BREAK FOR LUNCH

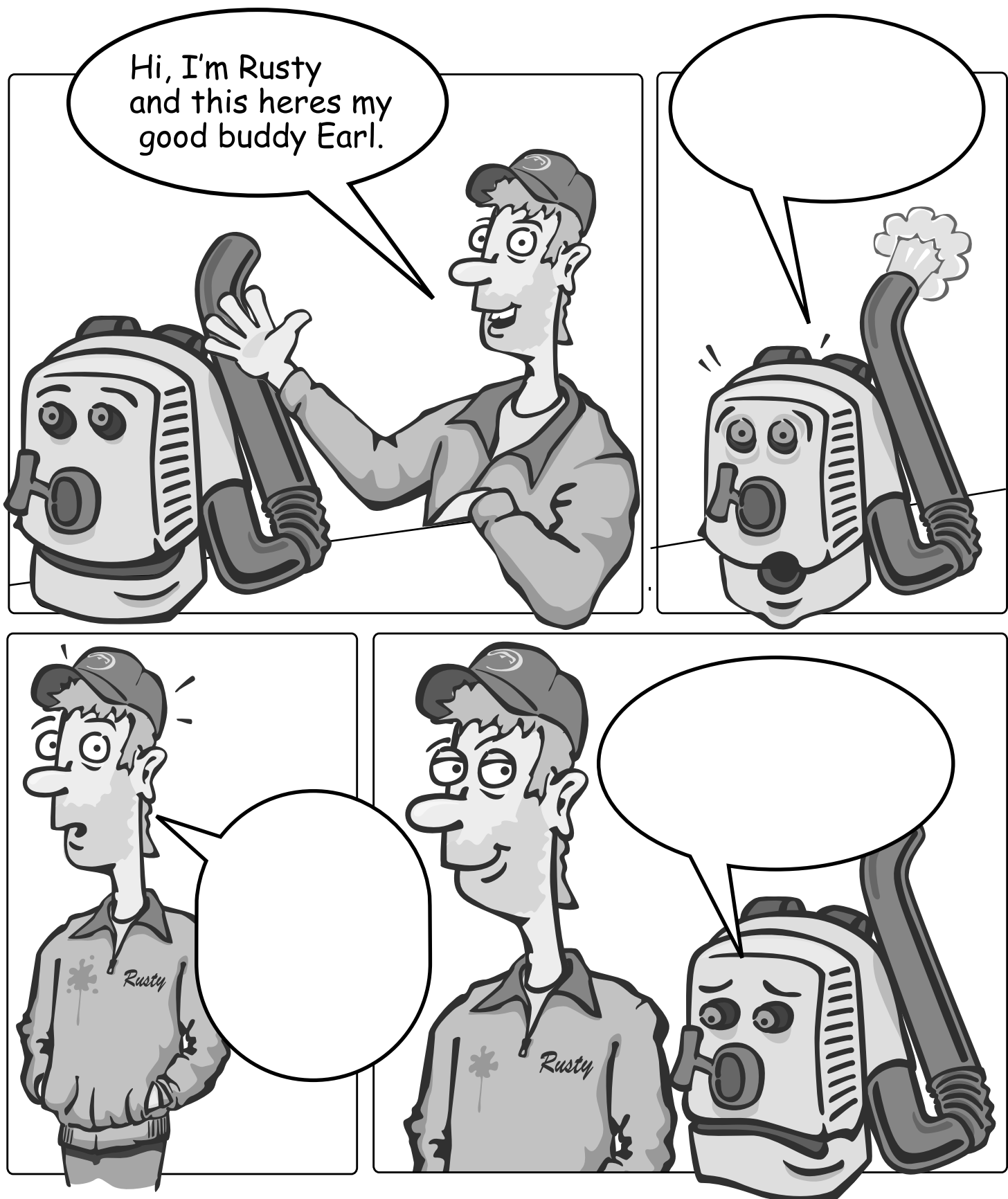
Find the 2 hamburger lunches that are exactly the same.



The lunches in three and eight are identical.

CREATE YOUR OWN COMIC STRIP

Get creative and finish the comic strip below starring the dashing young sweeper driver Rusty and his faithful companion (and backpack blower) Earl.

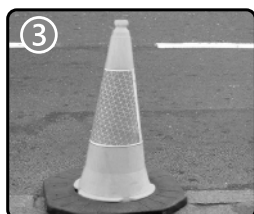


CROSSWORD PICTURE PUZZLE

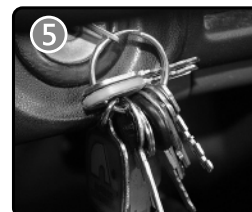
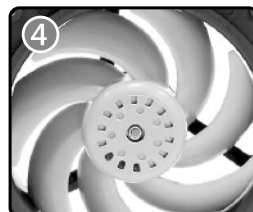
Complete the words by using the pictures below.

					1					1	
				2	2						
	3									5	
					4			4			
3											
	5										

ACROSS



DOWN



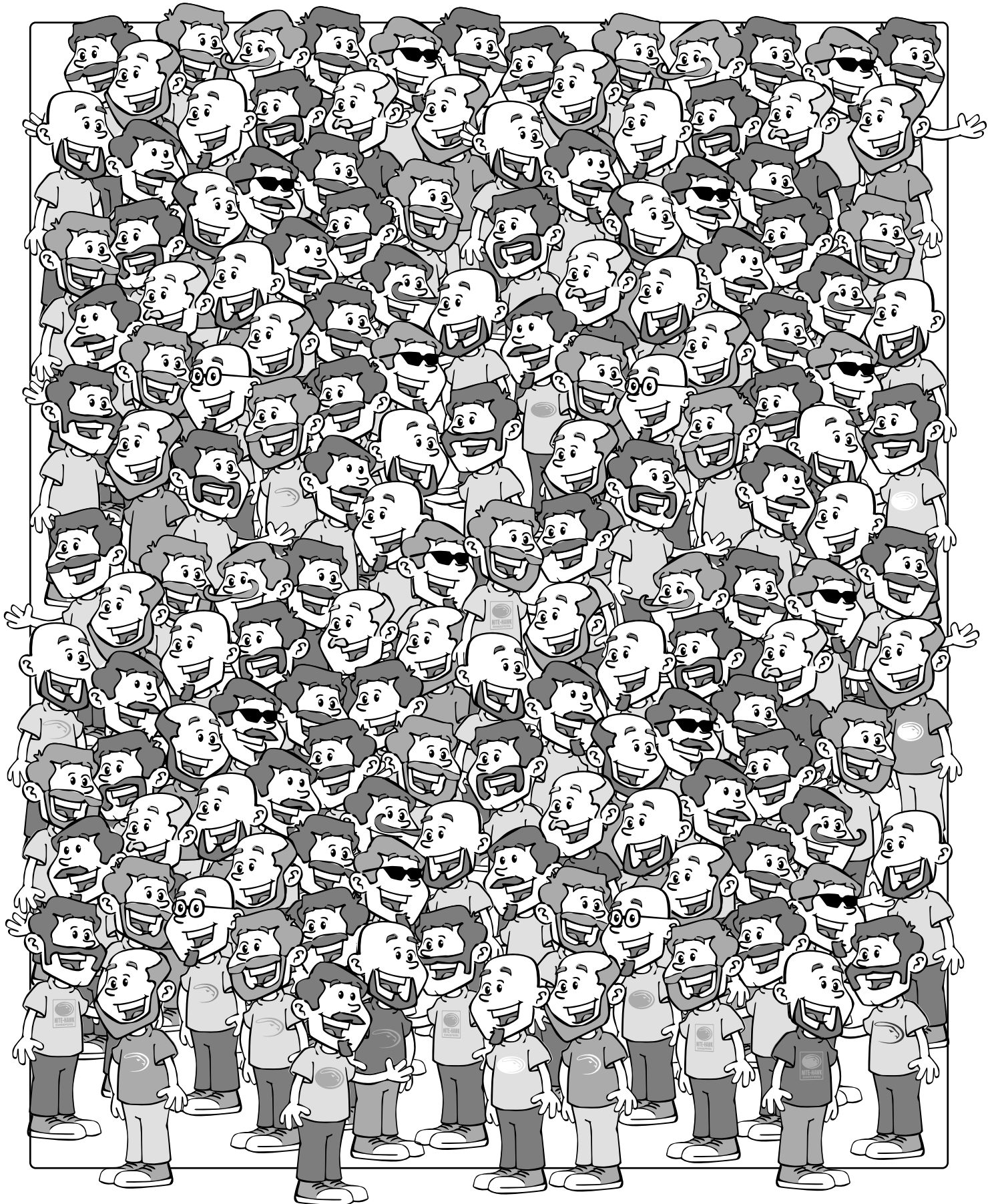
HELP RUSTY GET DRESSED

Cut out the items on the dotted lines and have fun playing dress-up!



MOUSTACHE MAYHEM!

Find the sweeper driver that does not have any facial hair.



He is approximately four sweeper drivers up from the end of this sentence.

SWEEPER DRIVER BINGO

Mark the boxes when you see one of the items on a parking lot. But please, not as you're driving.

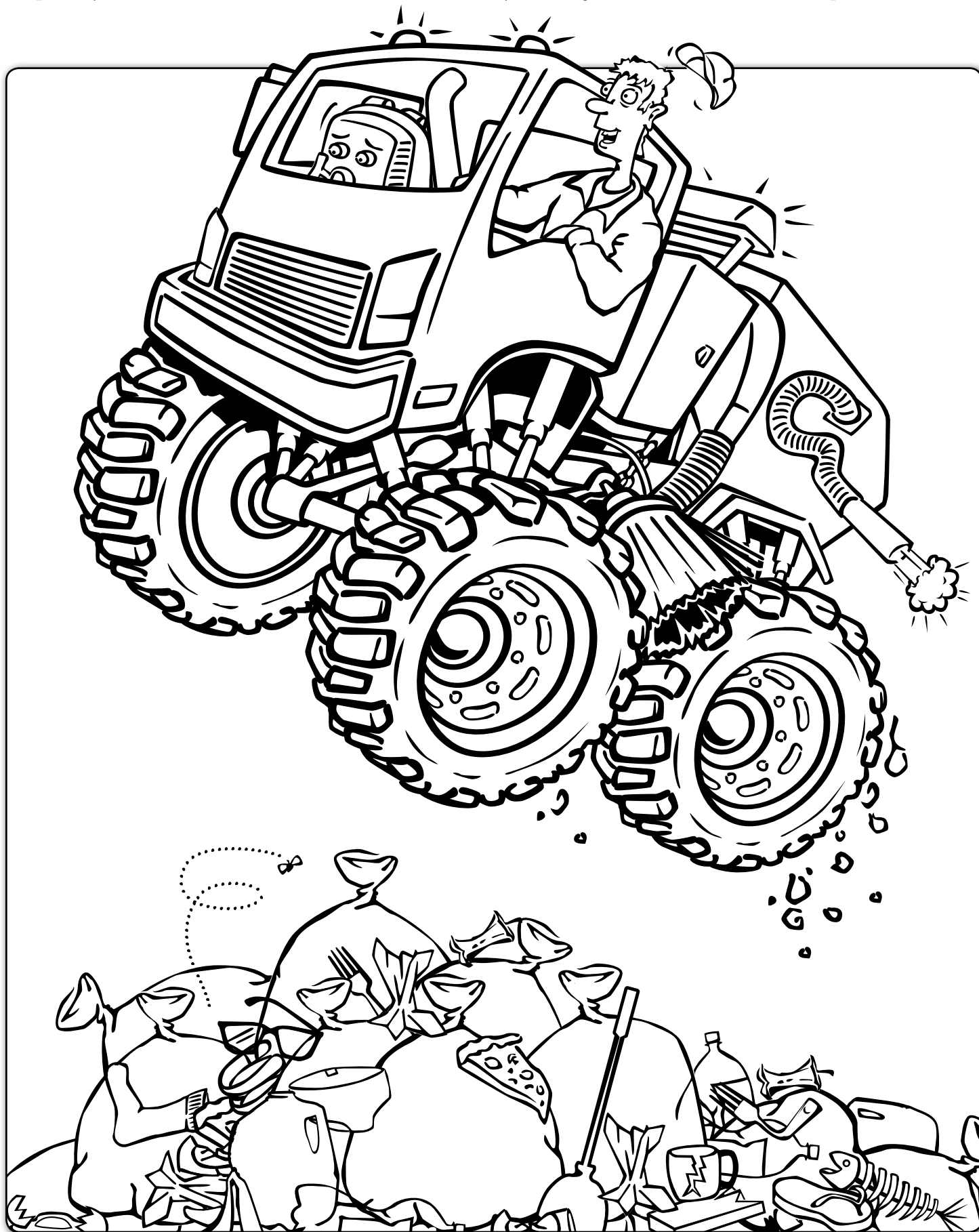


 Traffic Cone	 Moon	 Doughnut	 Mouse or Rat	 No Smoking Sign
 Banana Peel	 Bag of Trash	 Traffic Light	 Satellite Dish	 Police Car
 Spray Paint	 Crossing Sign	 FREE!	 Raptor Truck	 Curb Broom
 Dumpster	 Motor Oil	 Shoes on Wire	 Mailbox on Post	 Shooting Star
 Nite-Hawk Logo	 Airplane	 Black Cat	 Barber Pole	 UFO



MONSTER SWEEPER COLORING PAGE

Help Rusty and Earl make it over the mountain of trash by coloring their custom monster sweeper.



THE MAD MECHANIC

Somewhere in the mad mechanic's shop are these 6 objects below. Can you find them?



oil can



dollar bill



donut



toothbrush



slice of pie

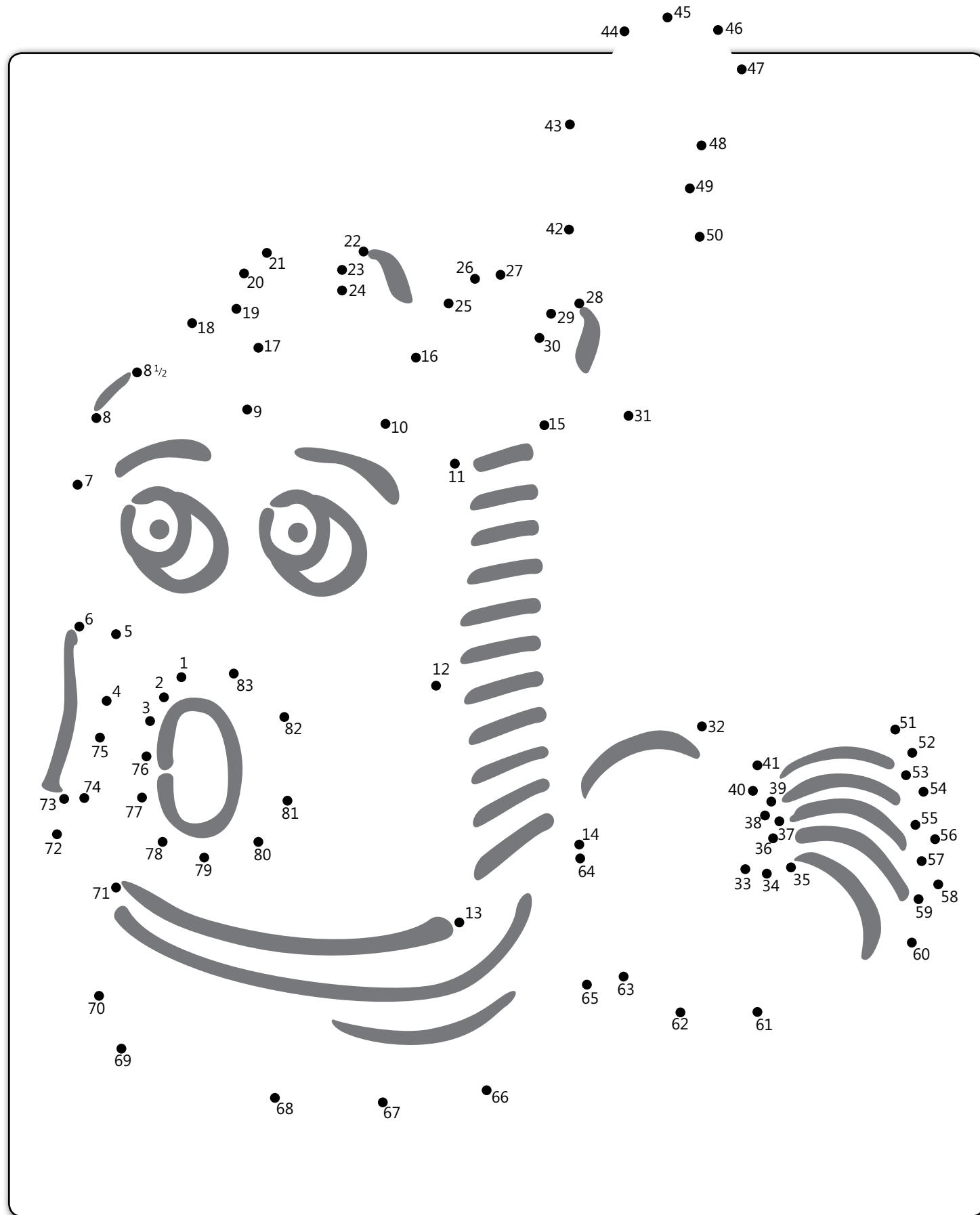


fan belt



DOT TO DOT

Can you figure out who's the sweeper driver's best friend is?



COMPLETE THE SWEEPER DRIVER

Draw a face on your favorite sweeper driver. You can even send in your drawing to Nite-Hawk Sweepers for a free prize!

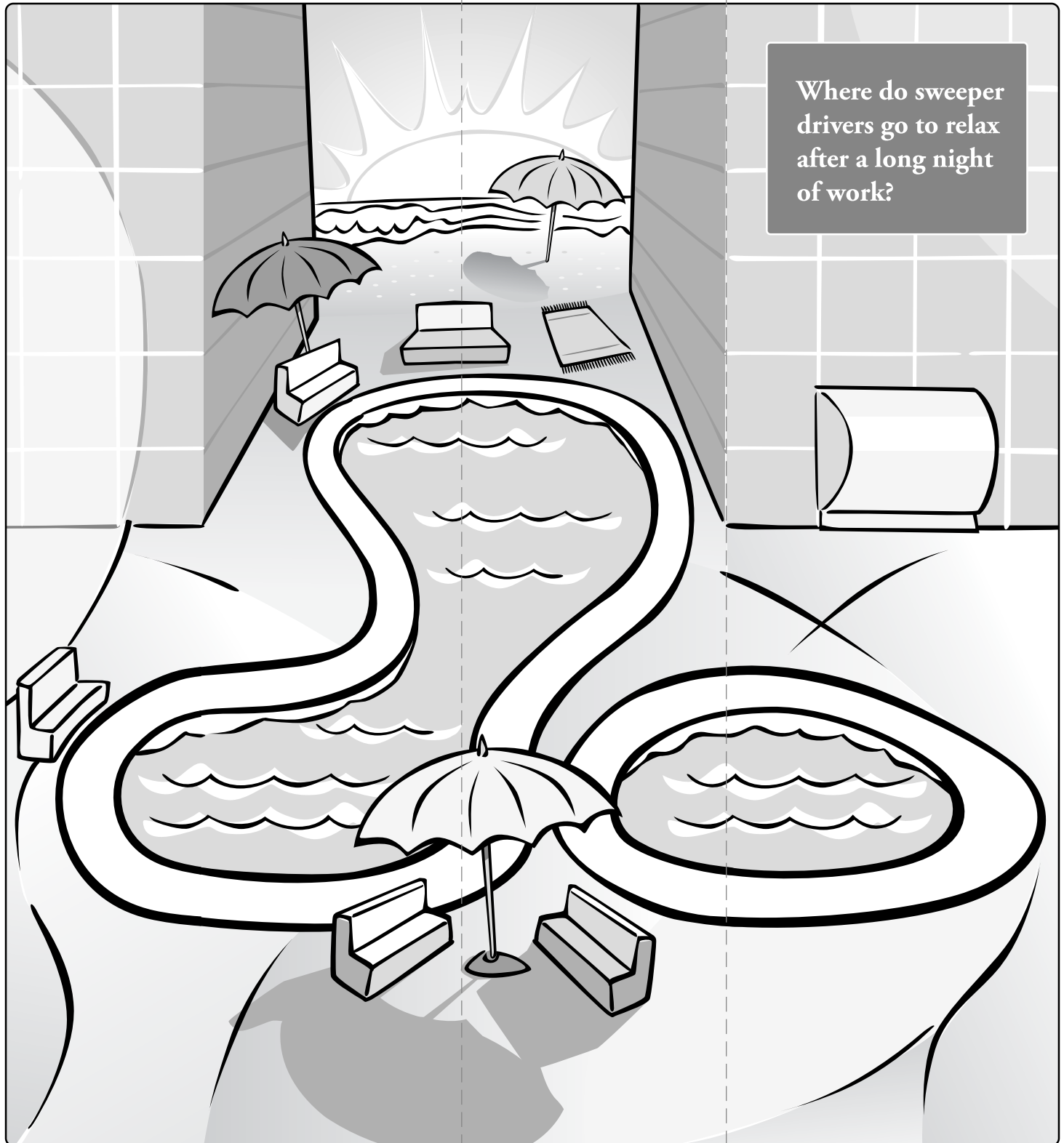


FOLDING MADNESS!

To solve the riddle, fold this page as shown by the dotted lines so that Point A touches Point B.

A ▶

◀ B



THE SECRET POOLS OF SUNNY BURLINGAME PLACE

WORDSEARCH-O-RAMA

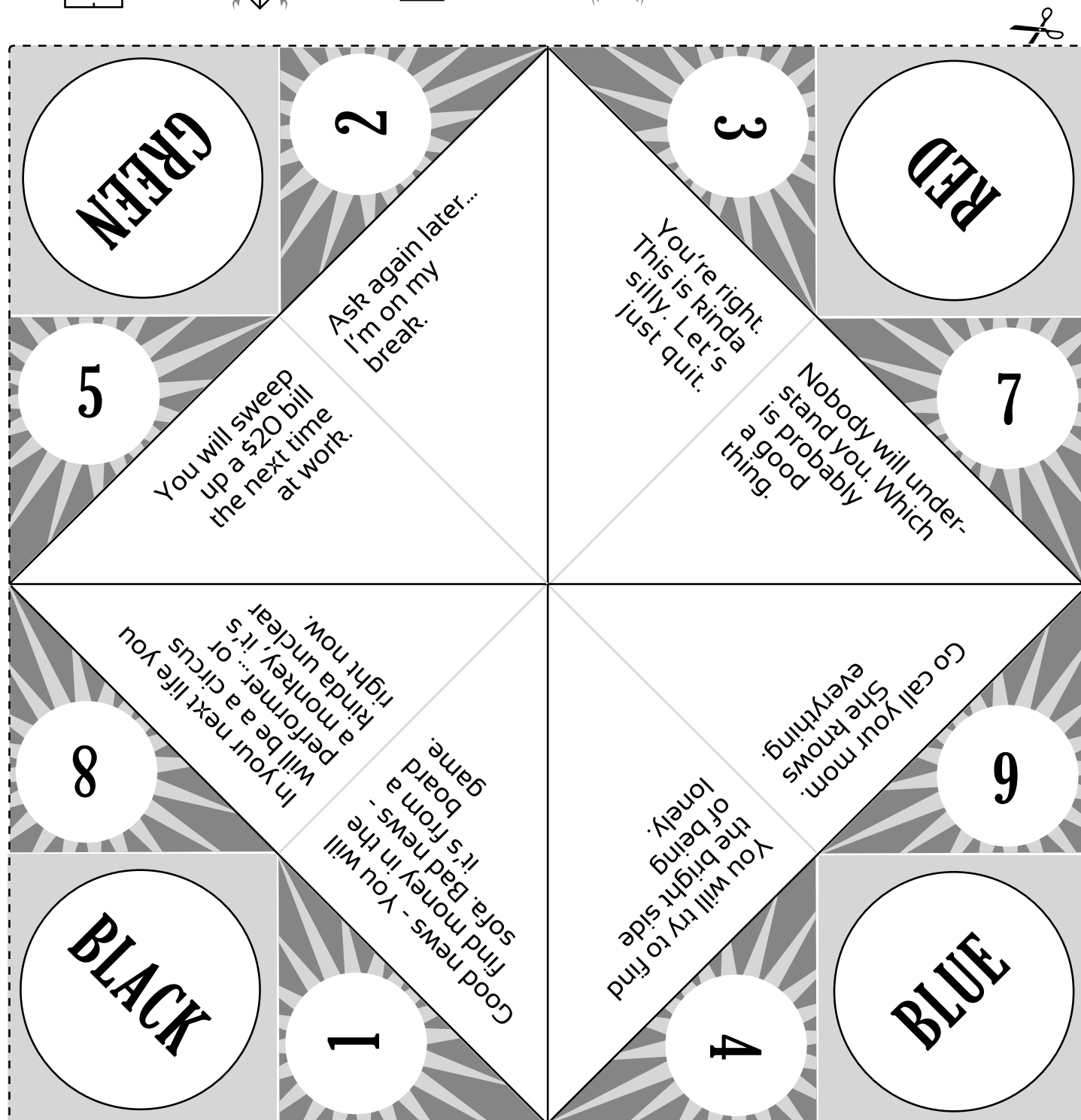
Can you find all the words in the puzzle below?

- POWERFUL
- OSPREY
- RUGGED
- TORQUE
- RAPTOR
- MANEUVERABLE
- SWEEPER
- CABOVER
- INNOVATIVE
- NITEHAWK
- HYDRAULIC
- PERFORMANCE
- DEPENDABLE
- EFFICIENT

T N N N V P Y T E O S U R U R I C L A F E N U B P
R K F N M R K Q M U T W R V Q L R M A E S U D E S
W E E E T P E E H A E E E H P R L F L E S E R W O
A R N R I L Y W O D N F N E C R C P R I A F E E E
W V I S A E L E E V C E C P P M S N S T O E E R E
O R E L R E A G U P N E U V N E A N A R P A N A B
A A R P R W G E E E E I E V E B R L M E F I B E N
S I S T N U L B R S E T T T E R V A R O R E S N E
I O C L R T W I P Q A E D E U R N A B U D Y E O R
P R R E R C E A I D E U A A H C A T E S B F L R C
R A N C L P N C E E O D C R E A L B O D S T V R E
R O E R B N E U K V L W E B I A W E L C E I I F O
F U O O A I I R P L R P P E P S E K P E O P F D B
A L E L M T E N V P W P E V I U A A Q P N I N C I
R I P M C E Y L P E P R A E I O O H B E C P H O E
T H E W A U R L E E S N U R L N T V U I E Y P I L
D N R A W E U U R A Y T P M N B A U E P D L N C A
D V Q O S F Q E C R B H P S U B A N L R O N W F G
R D I E R R V N O M V E N V M A T D A E O E N N E
C T R E O O N N R E U R E O P O F U N V A E P H P
O L W T B I E R C E A L E P P R L E A E U E I R P
G O D A E N P U U P R E E N R I I T F R P B U E R
P D C N U D N P T H E R O L C B I R I C E E T O W
S S M S I P D O E D M N N P N V O R D D N K D E A
F R R E V T R B E E R Y A R E N E A E M E E I R O

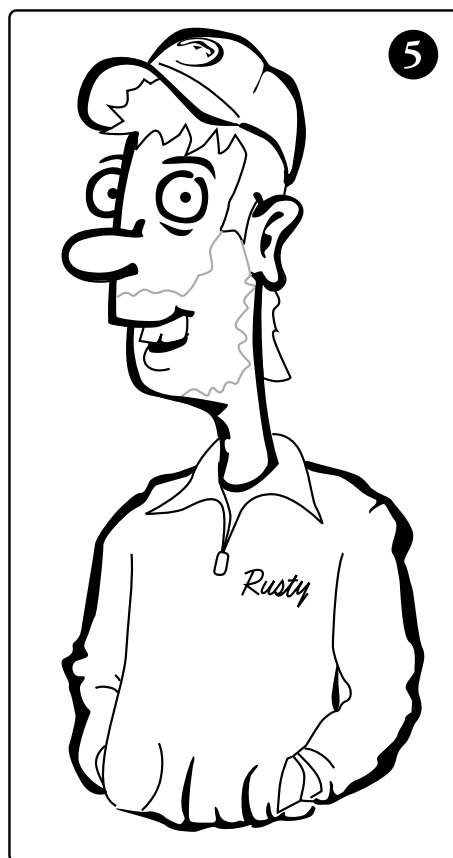
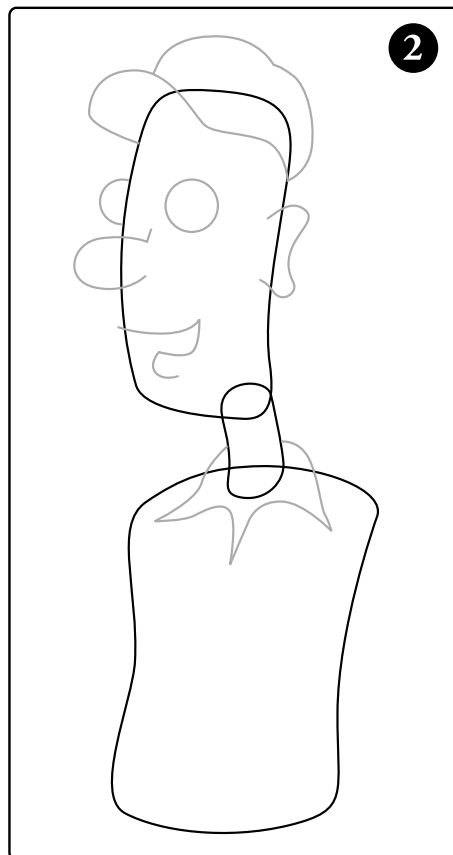
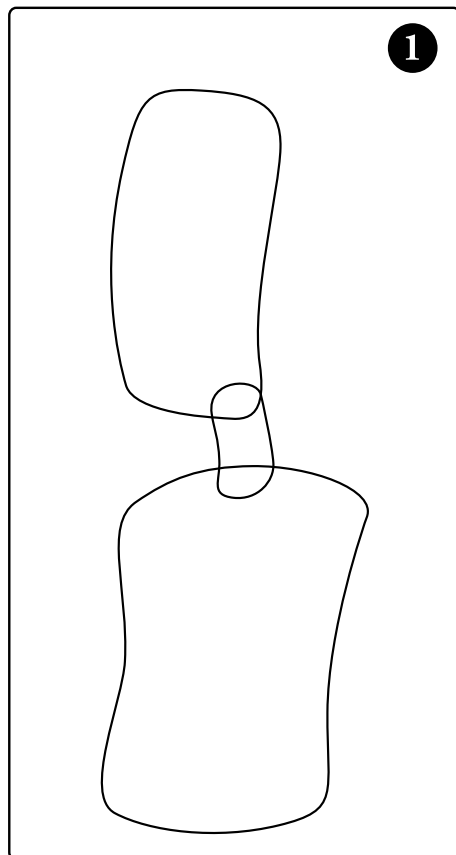
PSYCHIC SWEEPER

Cut out and ① place the paper with this side down. Fold into fourths, then unfold. ② Fold the four corners evenly into the middle. ③ Fold into fourths again, unfold, flip paper over. ④ Fold the four corners on this side of the paper evenly into the middle. ⑤ Fold into fourths one more time. ⑥ Fit your fingers into the slits and open.



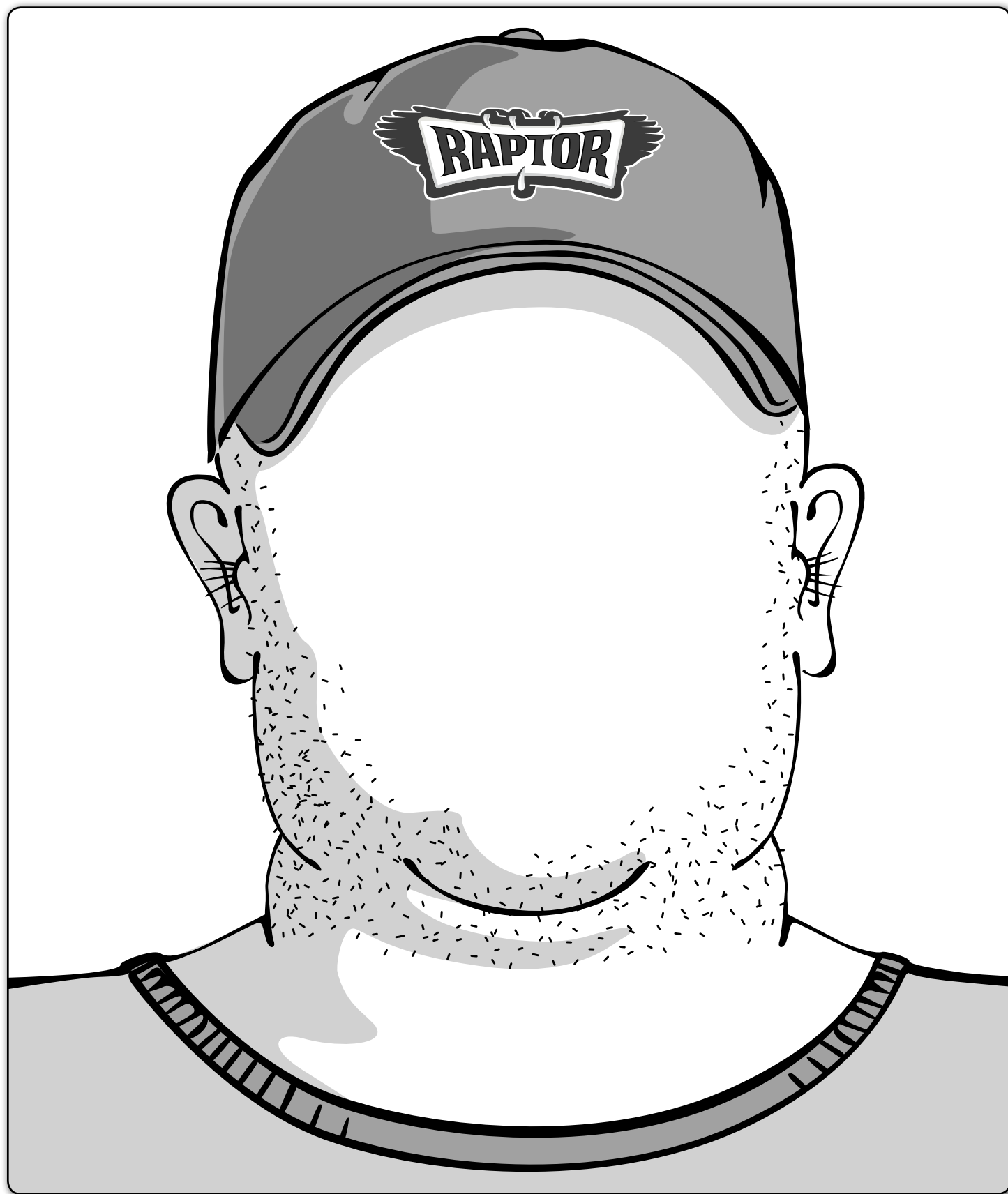
LEARN TO DRAW “RUSTY THE SWEEPER DRIVER”

Here's a step-by-step process of how you too can draw the super sweeper driver - Rusty!



COMPLETE THE SWEEPER DRIVER

Draw a face on your favorite sweeper driver. You can even send in your drawing to Nite-Hawk Sweepers for a free prize!



DAY TIMER FOR ROOKIE SWEEPER DRIVERS

Sometimes you just have to get organized. Hopefully this day planner will help all you “rookies” out there. You can even add your own items and use it for your next week!

DAY-TO-DAY PLANNER

1 Monday

7pm - Safety Meeting

2 Tuesday

1pm - Bubble Bath

3 Wednesday

11am - Brush Tooth

3pm - Go Fishing

4 Thursday

~~2pm - Go to gym!~~

3pm - Learn to make ice

5 Friday

Noon - Call Mom

1pm - Wash Truck

6 Saturday

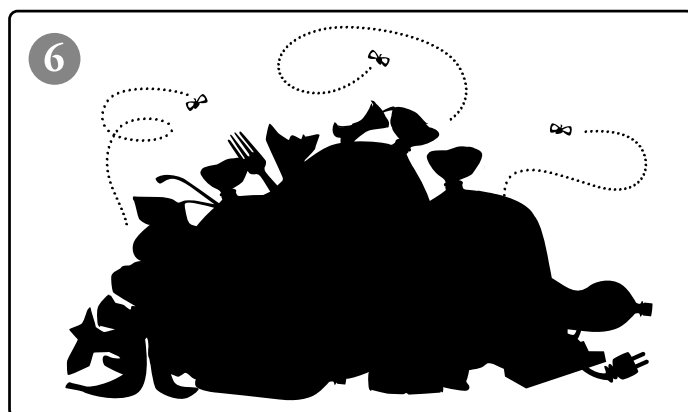
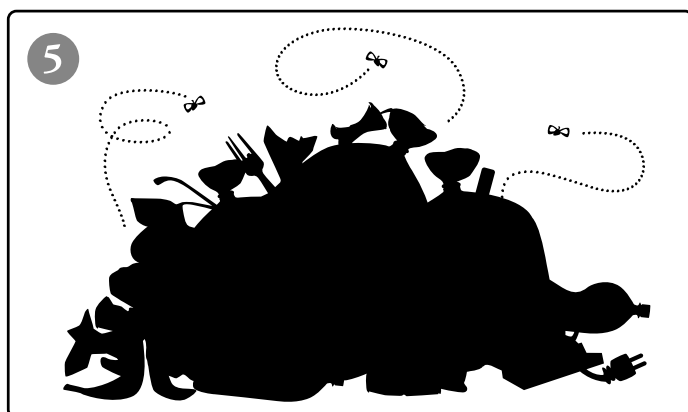
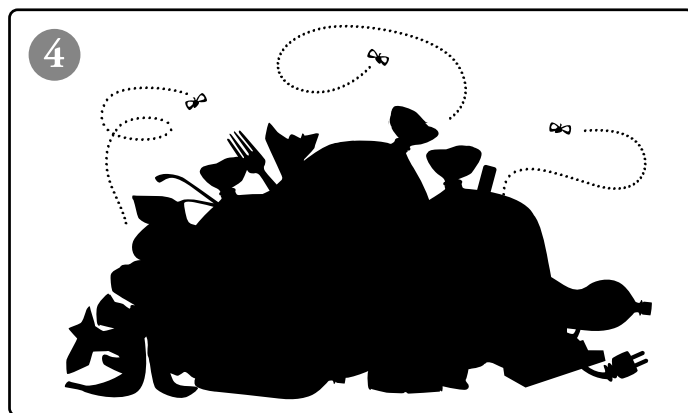
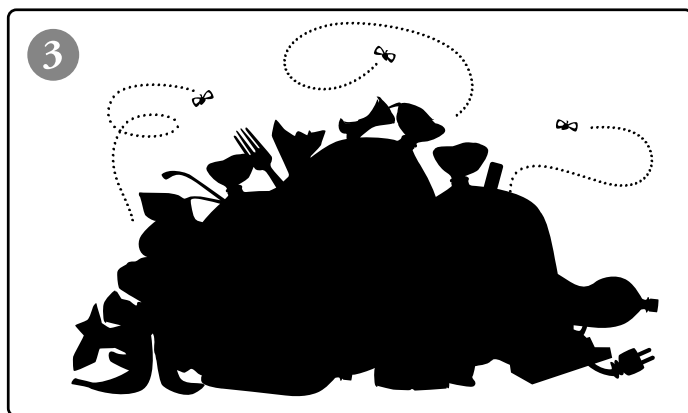
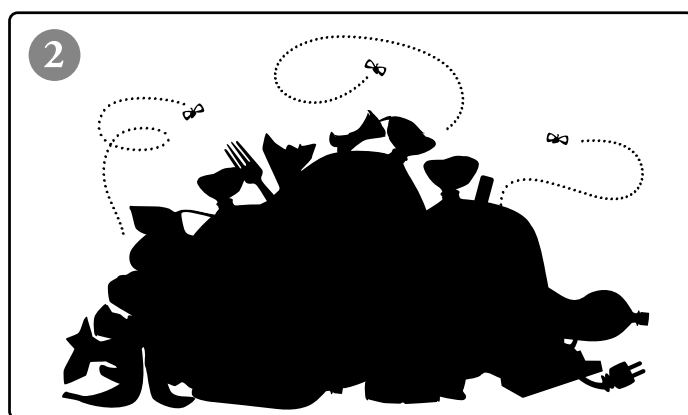
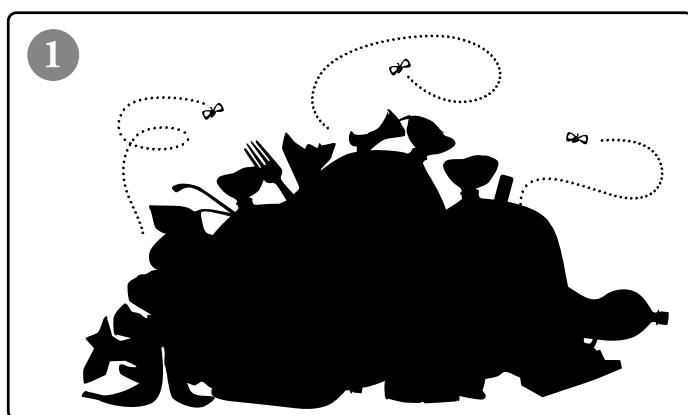
9am - Change Underwear

7 Sunday

FOOTBALL!

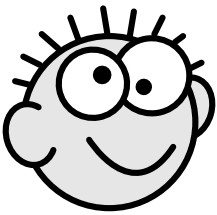
MATCH THAT TRASH

Only one “shadow” shape matches the trash pile to the right... can you correctly identify it?



trash pile number three is the correct match.

MAD LIBS



Nitehawk Sweeper Edition

Once upon a time there lived a nitehawk sweeper driver named _____. It was his
(proper noun)
job to sweep the _____ every night... but tonight was different. He picked up his
(noun)
buddy _____'s shift to sweep the _____. He loved _____
(proper noun) (noun) (verb)
others. When he reached _____ he was shocked to find a _____ lying in
(place) (noun)
front of his rig. At first he thought he could drive around it but soon realized it was just to
_____. He _____ out of his sweeper and tried to _____ it. All of
(adjective) (verb) (verb)
a sudden it _____ him. The driver immediately _____. He got back
(verb) (verb)
into his cab and _____. Moving on from this first situation was _____. He
(verb) (adjective)
needed to get to work and _____ this lot or his buddy would _____ at him.
(verb) (verb)
It was really late and very dark and he was _____. Never the less the job had to be
(adjective)
done. He took a _____ break and bought himself a _____. This should
(noun) (noun)
have been just what he needed to finish this _____ shift. No such luck. It tasted
(adjective)
like _____, causing him to _____ and _____ uncontrollably.
(noun) (verb) (verb)
From now on he would stick to his own shift and everybody else could go and
_____ themselves.
(verb)